

# Beyond261

Finding jobs for adults with disABILITIES

## Impact Report 2024



# DIRECTOR'S STATEMENT



---

---

I have been heavily influenced by the jobseekers we serve. My day-to-day includes my youngest son Will, who has Down Syndrome. My team chose to highlight his story in this impact report, and I have to say, "I am so proud of him!"

My workday also includes 25+ jobseekers that pass through our office each week either working in our programming or having their initial Meet and Greet intake session with our job developers. Each one touches us differently, but one thing they share is the amount of ABILITY they have in their disABILITY! Some of the jobseekers we feel might struggle with a job excel! And others we believe will have an easy transition struggle. The moral of the story is everyone has their unique ability, but isn't that normal with all society?

The changes this year at Beyond26 is all geared toward scaling our organization to handle more jobseekers' requests. Even though the numbers are like last year, I feel 2025 is set up to better serve our community. We changed job description to elevate Elisa Mlnarik to Associate Director, added a Program Director, Seidy Amaya and hired a part time Development Director to help me raise the funding we require. I feel we are on the road to success in these areas of our mission.

I am excited to see 2025 develop and I am planning to add a third job developer to staff by the end of the year. We also have transition on our board as 3 members retire after serving 5+ years. Our new Board members are Kailyn Hamm and Darin VanDuyn. Welcome!

Overall, I am blessed to see Beyond26 approach 7 years in our community serving our Jobseekers and their families, Business Partners and the West Michigan Community. Let's celebrate 2025.

"Finding Jobs for Adults with disABILITIES"



**DIRK BAKHUYZEN**

Executive Director





# OUR MISSION

---

---

---

The transition from Michigan's education system presents significant challenges for individuals with disABILITIES, particularly in securing meaningful employment.

**Beyond26** bridges this gap by fostering connections between capable jobseekers and local businesses through targeted networking and advocacy.

We are committed to identifying and overcoming obstacles to employment and volunteer opportunities, offering personalized support to our jobseekers before, during, and after they enter the workforce

Driven by our faith, we serve many jobseekers and employers across West Michigan, actively demonstrating our commitment through meaningful work.



# THE IMPACT



We are thrilled to announce our most impactful year to date!

This year, we successfully connected 54 job seekers across West Michigan with employment and volunteer opportunities, bringing our five-year total to 250 individuals served.

We are also witnessing growing enthusiasm from West Michigan businesses who are supporting our vision.

Continue reading to explore our expanded impact, review our financial highlights, and celebrate our achievements



# JOBSEEKERS BY THE NUMBERS

54

**New  
Jobseekers  
Served (2024)**

88%

**Job Retention  
Rate**

250

**Total  
Jobseekers  
Served**



# JOBSEEKER HIGHLIGHT



## WILL & NICK

Will and his best friend Nick have been shredding documents every summer and during some of the holiday breaks. They work well together, always sharing a machine and keeping the hum of the paper shredder active with a steady rhythm. Having Down Syndrome, Will's main disabilities include some cognitive, but his main disability is verbal. Speech is difficult for him. One-word answers at best. Nick, however, is verbal and can understand Will's speech and body language. Nick has more physical disabilities than cognitive.

Nick and Will exemplify mutual support by anticipating each other's needs; Will helps Nick with tasks like opening soda bottles and tying bags, while Nick advocates for Will and motivates him. This partnership reflects the idea of balance, akin to "Yeng and Yang," where one's strengths cover the other's weaknesses. Their dynamic aligns with the principle from II Corinthians 8:12-14, emphasizing mutual support in life, my strengths aiding others, while their strengths help me.

In the summer of 2022, Weller Truck Parts sought to include individuals with disabilities in their workforce, leading to a six-shift internship for Will and Nick through Beyond26. Initially supported by a job coach, they quickly became independent workers, balancing jobs with classes. Nick's parents are grateful, as they never expected him to hold a job. By 2023, Will graduated and expanded his work schedule, demonstrating excellent health with high activity levels.

In 2024, Nick added a solo workday, showcasing their independence and abilities through the opportunities provided. This past year was a year of growth for the two of them. We are proud of their accomplishment.





# ORGANIZATIONAL HIGHLIGHTS

---

In 2024, we hosted two fantastic community events!

It was incredibly heartwarming to meet face-to-face with those who support Beyond26.

These gatherings not only contribute to our financial growth but also strengthen our community of partners, volunteers, and friends.


Stay tuned for future events, as we eagerly anticipate seeing you there as well!

## 2024 Gala- Partners for Success



## 2024 Golf Outing





# BUSINESS PARTNERS BY THE NUMBERS

---

---

A key aspect of our vision is not only to connect job seekers with opportunities but also to showcase their capabilities to employers and community members. At Beyond26, we define a business partner as any business or organization that collaborates with us to hire or offer volunteer roles to one or more of our job seekers. Meanwhile, a business sponsor is an organization that supports our mission through financial contributions.



22

New Business  
Partners  
(2023)



120

Total Business  
Partners



34

Total Business  
Sponsors



# BUSINESS PARTNER *HIGHLIGHT*



Meijer has always been one of our most esteemed business partners. With multiple locations throughout West Michigan, their leadership facilitates seamless connections with the Human Resources Department at each site.

We have noticed that the Human Resources teams consistently greet our Jobseekers with respect and enthusiasm, taking the time to comprehend their career goals. Working alongside them is a truly enjoyable experience, and they are dedicated champions for our Jobseekers.

# REVENUE



## Individual Donations

\$126,170

## Grants

\$69,800

## Business Sponsors

\$51,325

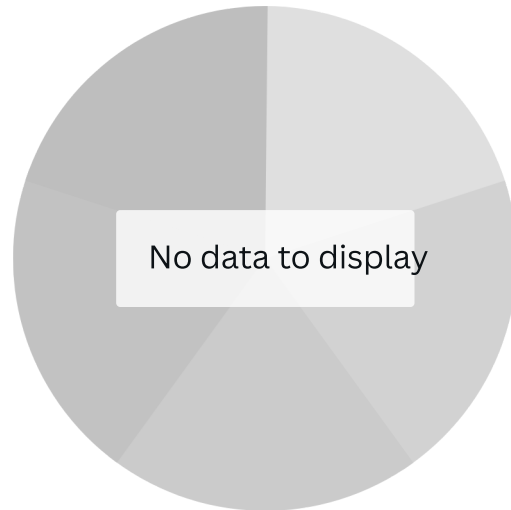
## Business Donations

\$59,486

## Programs

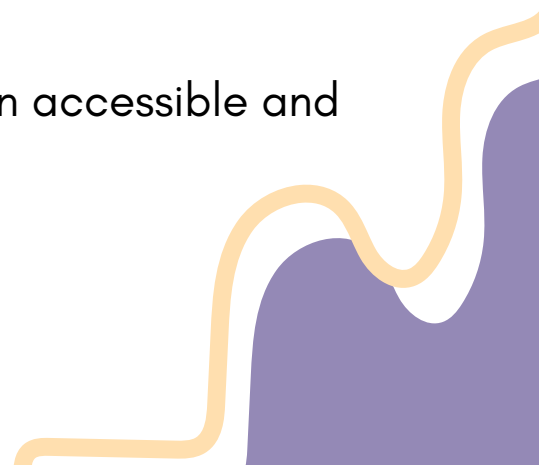
\$20,375

**TOTAL** | \$327,156



Donations are the lifeblood of any nonprofit, but for Beyond26, they are vital. Why? Because we've chosen a unique path. While most nonprofits generate over 80% of their revenue from service fees and government support, we provide barrier-free services. We charge nothing and accept no government funding. This is to eliminate the obstacles our jobseekers face: service costs and complex eligibility requirements.

Your donations ensure that our services remain accessible and free. Thank you!



# EXPENSES



## **Programs**

\$3,726

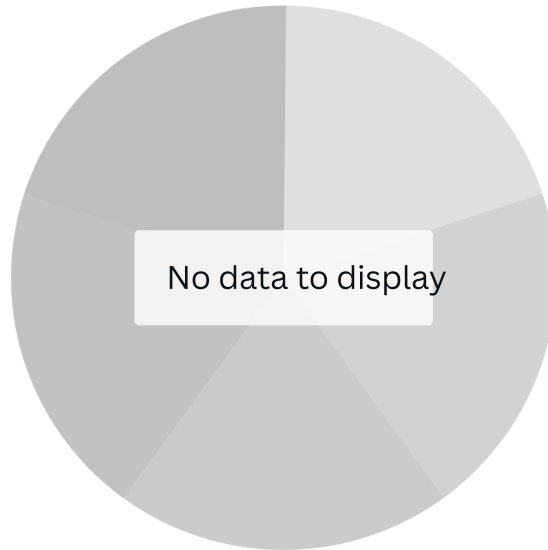
## **Services & Operations**

\$313,612

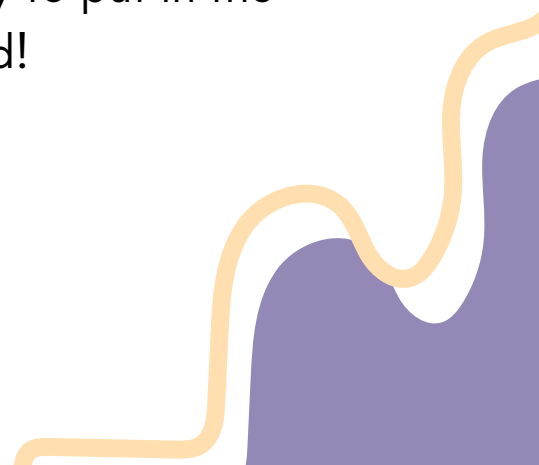
## **Fundraising**

\$26,524

**TOTAL** | \$343,862



This year, our expenses rose not only due to increased demand but also because we brought on a part-time Director of Development to enhance our funding. Additionally, we added a second crew for Pew Busters! Our full-time team is enthusiastic and ready to put in the effort needed to meet this growing demand!





# BOARD OF DIRECTORS



---

---

---

Robert Wondergem - President  
Dirk Bakhuyzen - Executive Director  
Jennifer Bakhuyzen- Secretary  
Darin VanDuyn- Treasurer  
Emily Mann  
Vicki Wondergem  
Kaylin Hamm

## STAFF

---

---

---

Dirk Bakhuyzen- Executive Director  
Elisa Mlnarik - Associate Director  
Jay Lancot- Director of Development  
Nick Goodwin- Job Developer  
Erin Jones - Job Developer  
Seidy Amaya- Program Manager

Grandville Shredding Supervisors  
Pam Mensodines  
Sheila Roach

Grand Haven Shredding Supervisors  
Marie Dukes  
Merri Seaver

3040 Ivanrest Ave SW  
Grandville, MI 49418  
(616) 884-6400  
[www.beyond26.org](http://www.beyond26.org)